



# Motorized Screen Supply

Direct Sourcing Parts for Motorized Sun Screen Manufactures

## PRODUCT CATALOG



### OUR MISSION:

Motorized Screen Supply, (MSS) is focused on resourcing and supplying the highest quality, most cost effective parts for motorized screen manufactures. Because we work directly with manufactures, our products are modified and or developed by screen manufactures. This catalog represents production parts currently being supplied to manufactures. We have assisted many manufactures in streamlining production while enhancing the overall quality of their product offerings. MSS parts fit your system, not the other way around. Don't just make do with what is offered. Contact us to improve your products while saving money.

CONTACT INFO:

# Motorized Screen Supply

Address: P.O. Box 4226 Odessa, Florida 33556  
 Customer Service: Nicole McKenzie 505-563-0668  
 Email: nicole @1stopglobalsourcing.com  
 Web Site: www. 1stopglobalsourcing.com

CONTENTS

<b>Brush - (pile weatherstripping) .....</b>	<b>Pg. 3</b>	<b>Tubular Motors 120v .....</b>	<b>Pg. 3</b>
- Hood Brush		- Single Channel	
- Bottom Bar Brush		- Multi Channel	
		- Wi-Fi Bridge	
		- Drive Gear (solid aluminum)	
<b>Idler Bearings .....</b>	<b>Pg. 4</b>	<b>Idler Bearing Mounting Plates .....</b>	<b>Pg. 4</b>
- Cradle Idler		- Cradle Idler Mounting Plate	
- Spring Idler		- Spring Idler Mounting Plate	
<b>Motor Mounting Plates .....</b>	<b>Pg. 4</b>	<b>End Caps - (housing).....</b>	<b>Pg. 4</b>
- Dooya Motor Mounting Plate		- Square Profile End Caps	
- Somfy Motor Mounting Plate		- Rounded Profile End Caps	
		- 45-deg. Articulated Profile End Cap	
<b>Zipper .....</b>	<b>Pg. 5</b>	<b>Keder .....</b>	<b>Pg. 5</b>
- Coil Zipper		- Single Flap	
- Molded Zipper		- Double Flap	
<b>Rubber Seal - (bottom bar) .....</b>	<b>Pg. 5</b>	<b>Cable Screen Mounting Bracket .....</b>	<b>Pg. 6</b>
- 4" Rubber Seal		- 5.5" Bracket	
- 6" Rubber Seal			
<b>Override .....</b>	<b>Pg. 6</b>	<b>Hand Cranks .....</b>	<b>Pg. 6</b>
- 4" Override		- 42" long	
- 8" Override		- 60" long	
<b>Cable Wire Hardware .....</b>	<b>Pg. 7</b>	<b>Cable Wire Gide - (bottom bar) .....</b>	<b>Pg. 7</b>
- Cable Hangers		- Gide - Aluminum	
- Cable Terminators			
- Cable Floor Anchors			
<b>Safety Wires for Cable Screen .....</b>	<b>Pg. 7</b>	<b>Cable Screen Wire - (stainless steel) .....</b>	<b>Pg. 7</b>
- Safety Wire Stainless Steel		- 4-mm Stainless Steel Wire	

## BRUSH (pile weatherstripping)

### Bottom Bar Brush

(Engineered to Fit, Samples Supplied for Verification)



- Minimum order: 30,000 ft. - 200 ft. spools
- 1" brush - (3) spools / box
- 1-1/2" & 2" brush - (2) spools / box
- Each 200 ft. spool - one continuous piece
- Note: one brush size per pallet
- Polypropylene brush and spline
- Ship ocean LCL (60 day delivery, A.F)

Part #	Description	Price
12.5/25-12P6L-132	1/2" spline x 1" length	.55/ft. del.
12.5/37-12P6L-132	1/2" spline x 1-1/2" length	.55/ft. del.
12.5/50-12P6L-132	1/2" spline x 2" length	.85/ft. del.
12.5/25-12P8L-132	1/2" spline x 1" length	.55/ft. del.
12.5/37-12P8L-132	1/2" spline x 1-1/2" length	.55/ft. del.
12.5/50-12P8L-132	1/2" spline x 2" length	.85/ft. del.
Part #	Description	Price
4.8/25-4P2L-80	1/4" spline x 1" length	.45/ft. del.
4.8/25-4P2L-132	1/4" spline x 1" length	.45/ft. del.
4.8/37-4P2L-80	1/4" spline x 1-1/2" length	.45/ft. del.
4.8/37-4P2L-132	1/4" spline x 1-1/2" length	.45/ft. del.
4.8/50-4P2L-132	1/4" spline x 2" length	.75/ft. del.

### Housing Brush - Soft / Hard

(Engineered to Fit, Samples Supplied for Verification)



- Minimum order: 30,000 ft. - 500 ft. spools
- (3) 500 ft. spools / box
- Each 500 ft. spool - one continuous piece
- Note: one brush size per pallet
- Polypropylene brush and spline
- Ship ocean LCL (60 day delivery, A.R.O)

Part #	Description	Price
3.3/9.5-8P132-20	1/8" spline x 3/8" length	.60/ft. del.
3.3/23.8-8P132-20	1/8" spline x 15/16" length	.60/ft. del.
3.3/25-8P132-20	1/8" spline x 1" length	.60/ft. del.
3.3/9.5-8P80-20	1/8" spline x 3/8" length	.60/ft. del.
3.3/23.8-8P80-20	1/8" spline x 15/16" length	.60/ft. del.
3.3/25-8P80-20	1/8" spline x 1" length	.60/ft. del.
3.3/9.5-60	1/8" spline x 3/8" length	.60/ft. del.
3.3/23.8-60	1/8" spline x 15/16" length	.60/ft. del.
3.3/25-60	1/8" spline x 1" length	.60/ft. del.
3.3/9.5-80	1/8" spline x 3/8" length	.60/ft. del.
3.3/23.8-80	1/8" spline x 15/16" length	.60/ft. del.
3.3/25-80	1/8" spline x 1" length	.60/ft. del.

## TUBULAR MOTORS

### Dooya Tube Motors

(Sample Supplied for Verification)



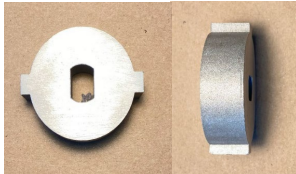
- Minimum order: 100 motors
- One order can contain both motors
- No minimum on remotes or Wi-Fi bridge
- Electronic limits & object detection
- (5) year warranty
- Ship ocean LCL (90 day delivery, A.R.O)

Part #	Description	Price
DM45EAF/S-15/32	120V motor - 14 ft. white cord, plug	\$100.00 ea. del.
DM45EAF/S-50/13	120V motor - 14 ft. white cord, plug	\$110.00 ea. del.
DD-2700H	Sgl. channel remote w/ battery	\$15.00 ea. del.
DD-2702H	15 channel remote w/ battery	\$15.00 ea. del.
DD-115H	Sgl. chnl. remote / battery Key chain	\$15.00 ea. del.
DDL02	Drive Gear - Dooya Plastic	\$3.95 ea. del.
DD-7002B	Wi-Fi Bridge	\$125.00 ea. del.

## DRIVE GEAR - (solid aluminum)

### Motor Drive Gear - Heavy Duty

(Engineered to Fit, Samples Supplied for Verification)



- Minimum order: 500 pieces
- Solid ACD-12 aluminum
- Ship ocean LCL (60 day delivery, A.R.O)

Part #	Description	Price
DG/DY	2-1/8" w x 5/8" th. Drive Gear	\$ 4.00 each del.

## IDLER BEARINGS

### Idlers

(Engineered to Fit, Samples Supplied for Verification)



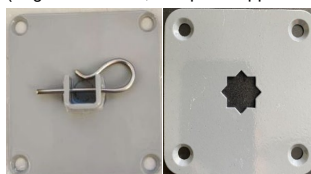
- Minimum order for 80mm, 70mm & 60mm idlers: 2,000 pieces
- Minimum order 405/70mm idler: 1,000 pieces
- An order can contain multiple sized idlers
- Nickel chrome plated shaft / spring
- 30-rpm rated steel ball bearings
- Ship ocean LCL (60 day delivery, A.R.O)

Part #	Description	Price
110/60	60mm Cradle Idler	\$ 5.90 each del.
110/70	70mm Cradle Idler	\$7.24 each del.
135/70-S	70mm Spring Idler	\$ 9.56 each del.
135/80-S	80mm Spring Idler	\$11.50 each del.
405/70-S	70mm Triple Base Spring Idler	\$18.00 each del.

## IDLER MOUNTING PLATES

### Idler Mounting Plates

(Engineered to Fit, Samples Supplied for Verification)



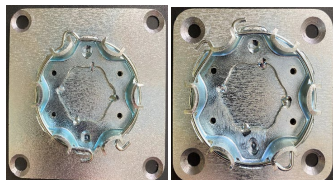
- Minimum order: 2,000 pieces
- An order can contain multiple sized plates
- An order can contain idler plates and motor brackets
- Powder coated steel plate
- Screw holes are counter sunk
- Ship ocean LCL (60 day delivery, A.R.O)

Part #	Description	Price
85/SIP	3-3/8" x 3-3/8" - 85mm	\$3.45 each del.
100/SIP	4" x 4" - 100mm	\$ 3.45 each del.
85/CIP	3-3/8" x 3-3/8" - 85mm	\$4.30 each del.
100/CIP	4" x 4" - 100mm	\$ 4.30 each del.

## MOTOR MOUNTING PLATES

### Motor Brackets - Somfy & Dooya

(Engineered to Fit, Samples Supplied for Verification)



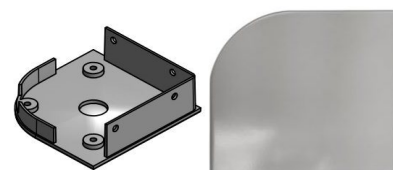
- Minimum order: 2,000 pieces
- An order can contain multiple sized brackets
- An order can contain idler plates and motor brackets
- Galvanized steel bracket
- Screw holes are counter sunk
- Ship ocean LCL (60 day delivery, A.R.O)

Part #	Description	Price
85/MP	3-3/8" x 3-3/8" - 85mm	\$ 4.48 each del.
100/MP	4" x 4" - 100mm	\$ 4.53 each del.

## END CAPS

### Housing End Caps - Aluminum

(Engineered to Fit, Samples Supplied for Verification)



- Minimum order: 5,000 pieces
- An order can contain multiple sizes & colors
- Minimum order any sized end cap: 2,000 pieces
- Minimum order any color: 1,000 pieces
- Powder coated ACD-12 aluminum
- Ship ocean LCL (60 day delivery, A.R.O)

Part #	Description	Price
4.5/RP	4-1/2" - rounded profile	\$ 6.67 each del.
5.5/RP	5-1/2" - rounded profile	\$ 6.00 each del.
7/RP	7" - rounded profile	\$ 8.30 each del.
4.5/AP	4-1/2" - articulated profile	\$ 6.67 each del.
5.5/AP	5-1/2" - articulated profile	\$ 6.00 each del.
7/AP	7" - articulated profile	\$ 6.67 each del.
4.5/SP	4-1/2" - square profile	\$ 6.67 each del.
5.5/SP	5-1/2" - square profile	\$ 6.00 each del.
7/SP	7" - square profile	\$ 6.67 each del.



## ZIPPER

### Zipper - Coil & Molded

(Samples Supplied for Verification)



- Minimum order #5 coil or molded zipper: 10,000 yds.
- Minimum order # 8 coil or molded zipper: 10,200 yds.
- #5 zipper - 200 yd. rolls
- #8 zipper - 150 yd. rolls
- #5 & #8 zipper has no more than (3) breaks / roll
- An order can contain multiple sizes and colors
- Ship ocean LCL (60 day delivery, A.R.O)

Part #	Description	Price
5-CZ-B/W	#5 coil - black or white	\$ 1.15/yd. del.
5-MZ-B/W	#5 molded - black or white	\$ 1.20/yd. del.
8-CZ-B/W	#8 coil - black or white	\$ 1.16/yd. del.
8-MZ-B/W	#8 molded - black or white	\$ 1.22/yd. del.

## RUBBER SEAL

### Bottom Bar Seal - (rubber)

(Engineered to Fit, Samples Supplied for Verification)



- Minimum Order: 6,000 ft. / color - 200 ft. rolls
- An order can contain both sizes & multiple colors
- Ship ocean LCL (60 day delivery, A.R.O)

Part #	Description	Price
4-WH/BL	4" wide - Black or White Color	\$0.55/ft. del.
4-GR/BR	4" wide - Grey or Bronze Color	\$0.73/ft. del.
4-IV/BE	4" wide - Ivory or Beige Color	\$0.76/ft. del.
6-WH/BL	6" wide - Black or White Color	\$1.02/ft. del.
6-GR/BR	6" wide - Grey or Bronze Color	\$1.02/ft. del.
6-IV/BE	6" wide - Ivory or Beige Color	\$1.02/ft. del.

## KEDER

### Keder - Single Flap

(Samples Supplied for Verification)

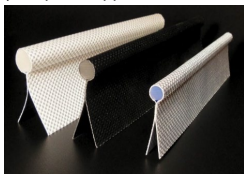


- Minimum order: 2,186 yds. (5) spools / color / size
- 437 yd. spool - one continuous piece
- (1) spool / box
- An order can contain multiple sizes and colors
- Additional keder sizes available
- PVC coated polyester fabric
- Ship ocean LCL (60 day delivery, A.R.O)

Part #	Description	Price
4S/10/10-W	White, 4mm Cord, 10mm Flap, 10mm Weld	\$1.12/yd. del.
4S/10/10- B	Black, 4mm Cord, 10mm Flap, 10mm Weld	\$1.17/yd. del.
4S/10/25-W	White, 4mm Cord, 10mm Flap, 25mm Weld	\$0.88/yd. del.
4S/10/25- B	Black, 4mm Cord, 10mm Flap, 25mm Weld	\$1.10/yd. del.
5S/5/10-W	White, 5mm Cord, 5mm Flap, 10mm Weld	\$1.35/yd. del.
5S/5/10- B	Black, 5mm Cord, 5mm Flap, 10mm Weld	\$1.40/yd. del.
5S/10/25-W	White, 5mm Cord, 10mm Flap, 25mm Weld	\$1.00/yd. del.
5S/10/25- B	Black, 5mm Cord, 10mm Flap, 25mm Weld	\$1.10/yd. del.
6S/10/10-W	White, 6mm Cord, 10mm Flap, 10mm Cord	\$1.42/yd. del.
6S/10/10- B	Black, 6mm Cord, 10mm Flap, 10mm Weld	\$1.42/yd. del.
6S/10/25-W	White, 6mm Cord, 10mm Flap, 25mm Weld	\$1.33/yd. del.
6S/10/25-B	Black, 6mm Cord, 10mm Flap, 25mm Weld	\$1.33/yd. del.

### Keder - Double Flap

(Samples Supplied for Verification)



- Minimum order: 2,186 yds. (5) spools / color / size
- 437 yd. spool - one continuous piece
- (1) spool / box
- An order can contain multiple sizes and colors
- Additional keder sizes available
- PVC coated polyester fabric
- Ship ocean LCL (60 day delivery, A.R.O)

Part #	Description	Price
4D/10/10-W	White, 4mm Cord, 10mm Flap, 10mm Weld	\$1.21/yd. del.
4D/10/10- B	Black, 4mm Cord, 10mm Flap, 10mm Weld	\$1.21/yd. del.
4D/10/25-W	White, 4mm Cord, 10mm Flap, 25mm Weld	\$1.13/yd. del.
4D/10/25- B	Black, 4mm Cord, 10mm Flap, 25mm Weld	\$1.13/yd. del.
5D/5/10-W	White, 5mm Cord, 5mm Flap, 10mm Weld	\$1.43/yd. del.
5D/5/10- B	Black, 5mm Cord, 5mm Flap, 10mm Weld	\$1.43/yd. del.
5D/10/25-W	White, 5mm Cord, 10mm Flap, 25mm Weld	\$1.15/yd. del.
5D/10/25- B	Black, 5mm Cord, 10mm Flap, 25mm Weld	\$1.15/yd. del.
6D/10/10-W	White, 6mm Cord, 10mm Flap, 10mm Weld	\$1.46/yd. del.
6D/10/10- B	Black, 6mm Cord, 10mm Flap, 10mm Weld	\$1.46/yd. del.
6D/10/25-W	White, 6mm Cord, 10mm Flap, 25mm Cord	\$1.47/yd. del.
6D/10/25-B	Black, 6mm Cord, 10mm Flap, 25mm Weld	\$1.47/yd. del.

## CABLE SCREEN MOUNTING BRACKET

### Cable Screen Bracket

(Engineered to Fit, Samples Supplied for Verification)



- Minimum order: 1,000 pieces - 400 pieces / color
- (1) order - (2) brackets
- (1) pair required per screen
- Valance can be attached to bracket
- Powder coated steel bracket
- Ship ocean LCL (60 day delivery, A.R.O)

Part #	Description	Price
5.5/CB	5-5/8" w x 5-1/4" h overall	\$11.90 / pair del.

## OVERRIDES

### Screen Override

(Samples Supplied for Verification)



- Minimum order: 500 pieces - 250 pieces / color
- 11/1 turn ratio - brass gears
- 7/1 turn ratio - brass gears
- 5/1 turn ratio - stainless steel gears
- 3/1 turn ratio - stainless steel gears
- 4" or 8" shaft available
- Shaft finish - brush aluminum
- Hook finish - nickel plated chrome
- Standard housing finish - white
- Ship ocean LCL (60 day delivery, A.R.O)

Part #	Description	Price
OR/4/11	4" I shaft - 11/1 Turn Ratio	\$ / each del.
OR/4/7	4" I shaft - 7/1 Turn Ratio	\$ / each del.
OR/4/5	4" I shaft - 5/1 Turn Ratio	\$ / each del.
OR/4/3	4" I shaft - 3/1 Turn Ratio	\$ / each del.
OR/8/11	8" I shaft - 11/1 Turn Ratio	\$ / each del.
OR/8/7	8" I shaft - 7/1 Turn Ratio	\$ / each del.
OR/8/5	8" I shaft - 5/1 Turn Ratio	\$ / each del.
OR/8/3	8" I shaft - 3/1 Turn Ratio	\$ / each del.

## HAND CRANKS

### 90-deg. - Hand Cranks

(Engineered to Fit, Samples Supplied for Verification)



- Minimum order: 500 pieces
- Available in 42" and 60" overall lengths
- Handle adjust from straight to 90-deg.
- Standard finishes: white & black
- Metal finishes: nickel plated chrome
- An order can contain multiple sizes and colors
- Ship ocean LCL (60 day delivery, A.R.O)

Part #	Description	Price
HC/42/W	42" long, 90-deg. Crank - White	\$ ea. del.
HC/42/B	42" long, 90-deg. Crank - Black	\$ ea. del.
HC/60/W	60" long, 90-deg. Crank - White	\$ ea. del.
HC/60/B	60" long, 90-deg. Crank - Black	\$ ea. del.

## Cable Wire Hardware

### Wire Hardware

(Engineered to Fit, Samples Supplied for Verification)

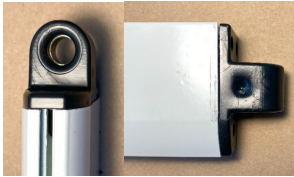


- Minimum order: 500 packets
- Each Packet Contains: (2) cable hangers, (2) cable floor anchors, (2) cable terminators/tighteners, & (4) locking nuts
- (1) packet required per screen
- 116-ga. stainless steel
- Ship ocean LCL (60 day delivery, A.R.O)

Part #	Description	Price
SS-CH	Cable Hardware Packet	\$35.84 ea. pk. del.

### Cable Guide

(Engineered to Fit, Samples Supplied for Verification)

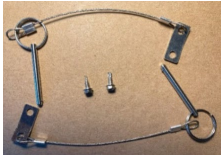


- Minimum order: 500 packets
- One packet contains (2) guides
- (1) packet required per screen
- ACD-12 aluminum
- Finish - anodized or brushed aluminum
- Ship ocean LCL (60 day delivery, A.R.O)

Part #	Description	Price
CG/4	4mm Cable Guide Packet	\$ each pk. del.

### Safety Wire

(Engineered to Fit, Samples Supplied for Verification)



- Minimum order: 500 packets
- Each packet contains (2) safety wire assemblies w/ screws
- (1) packet required per screen
- 116-ga. stainless steel
- Ship ocean LCL (60 day delivery, A.R.O)

Part #	Description	Price
SS-CH	Safety Wire Assembly Packet	\$9.93 ea. pk. del.

### Cable Wire Rope

(Samples Supplied for Verification)



- Minimum order: 10,000 ft. - 1,000 ft. spools
- Addition cable wire gauges available
- Ship ocean LCL (60 day delivery, A.R.O)

Part #	Description	Price
4/316-SS	4mm - 316 Stainless Rope	\$ 379.00 / spool del.

## Purchasing Terms

- Samples will be supplied to confirm fit, function, and quality for existing parts.
- Final production samples will be supplied to confirm fit, function, and quality for new or modified parts.
- Pricing and payments in USD.
- Unit pricing is FOB delivered.
- Customer is responsible to verify correctness of all deliveries.
- Production occurs in three - four weeks, with an additional 45 days of shipping prior to delivery.
- Motorized Screen Supply is not responsible for delivery delays due to unforeseen or unscheduled shipping delays.
- Scheduled holidays may delay shipping and delivery schedules.
- Payment terms with approved credit: 30% at order, 70% due upon delivery.
- Payment terms without credit: 100% due at order.
- An order will not be generated until deposit or full payment is received.
- A finance charge of 2% will be added to all unpaid balances over 30 days.